



MagnaBoard

Magnesium Oxide Board

High performance building boards offering innovative, sustainable and effective building solutions for new-build, renovation and restoration projects.



TESTED & APPROVED

for use with Arc Tile Adhesives & Grouts

MagnaBoard

Magnesium Oxide Board

Arc MagnaBoards are high performance chloride free magnesium oxide boards offering innovative, sustainable and effective building solutions for new-build, renovation and restoration projects. They are fire rated to A1, unaffected by water, moisture & humidity, durable & impact resistant, sound & heat insulating, lightweight and easy to install. Unlike plasterboard and plywood, Arc MagnaBoards will not physically deteriorate, swell or buckle when subjected to water or moisture making them the perfect wall or floor tiling substrate in areas subject to water, moisture and humidity.

MagnaBoards are non-combustible and have an A1 Fire Rating making them ideal for use as internal fire resistant wall & ceiling boards or where heat resistance is required such as around stoves and boilers. MagnaBoards can be easily utilised as internal wall cladding, on stud frames, as wall partitions or in ceiling and prefab construction.

The boards are suitable for external use but should have a final waterproof finish applied such as a waterproof external render or coating.

MagnaBoards will accept a variety of finishes such as tiles, wallpaper, plaster, paint and render.



Fireproof

A1 fire rated. Non flammable and non combustible



Moisture & Water Resistant

Will not physically deteriorate, swell or buckle



Mould & Rot Resistant

Constructed with materials resistant to mould growth



Impact Resistant

Withstands abuse including surface impact. Reinforced with fiberglass mesh



Easy Installation

Can be easily cut or scored & snapped



Heat/Sound Insulation

High thermal and acoustic resistance



Technical Data

PROPERTY	ARC MAGNABOARD
Size	1200mm x 600mm 1200mm x 1200mm 2400mm x 1200mm
Thickness	6mm & 12mm
Density	>1000kg/m ³
Colour	White
Flexural strength	12-14 MPA (12mm)
Surface Alkalinity	9-10
Thermal Conductivity	0.124w/mk
Sound Insulation	44dB
Water Vapour Permeability	.78
Combustion Property	A1 Grade

Size Availability

SIZE	PACKED	PROD CODE	WEIGHT PER BOARD
1200mm x 600mm x 6mm	160 boards/pallet	ARMB001	4.5kg
1200mm x 600mm x 12mm	75 boards/pallet	ARMB002	9.5kg
1200mm x 1200mm x 6mm	146 boards/pallet	ARMB005	9.5kg
1200mm x 1200mm x 12mm	73 boards/pallet	ARMB006	19kg
2400mm x 1200mm x 6mm	104 boards/pallet	ARMB004	19kg
2400mm x 1200mm x 12mm	52 boards/pallet	ARMB003	38kg



Installation Guidelines

Substrates

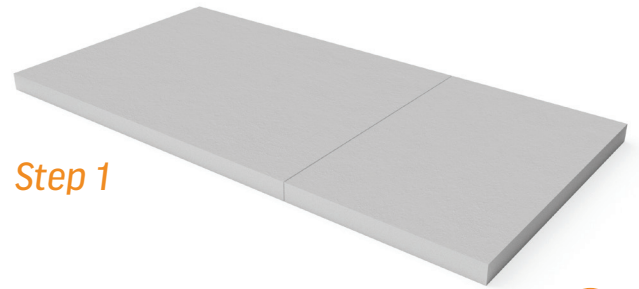
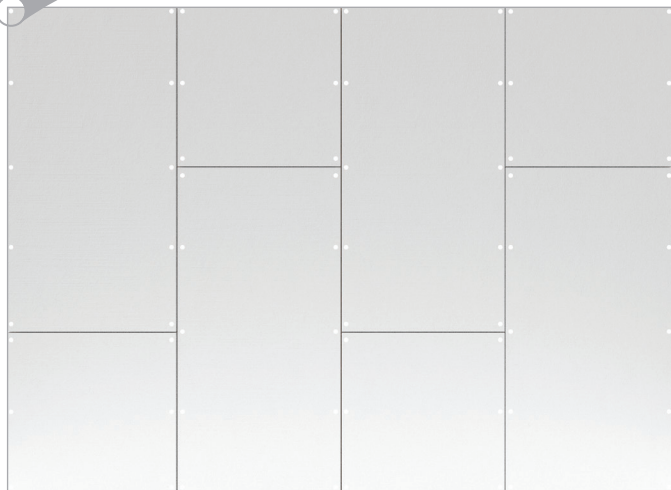
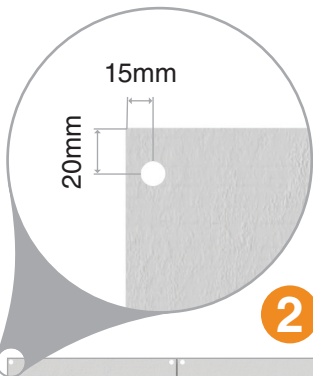
All substrates should be sound, clean, dry, level and free from any contamination. Substrates must be dimensionally stable and strong enough to support the expected traffic loading.

Cutting ①

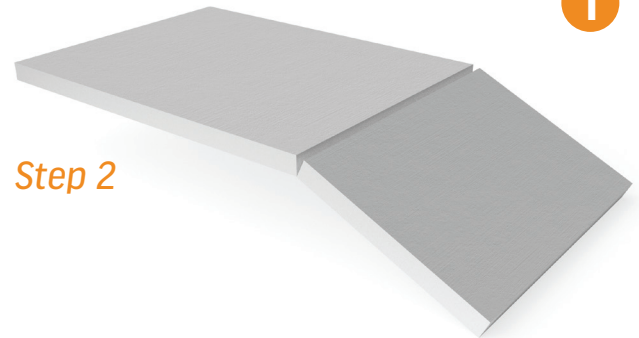
Arc MagnaBoards can be easily scored and snapped to shape and size using a standard utility knife. Mark out and score making sure to slice the fiberglass mesh. Then simply press the board downwards, snapping it at the score & snap line. Smooth and tidy up edges using a light abrasive.

Fixings ②

All fixings should be stainless steel or galvanised screws. Ensure no fixings protrude. Apply fixings at a minimum of 15mm from the edge and 20mm from the corner of the board. Boards should always be off set so that 4 corners never meet at one point.



Step 1



Step 2

Joints ③

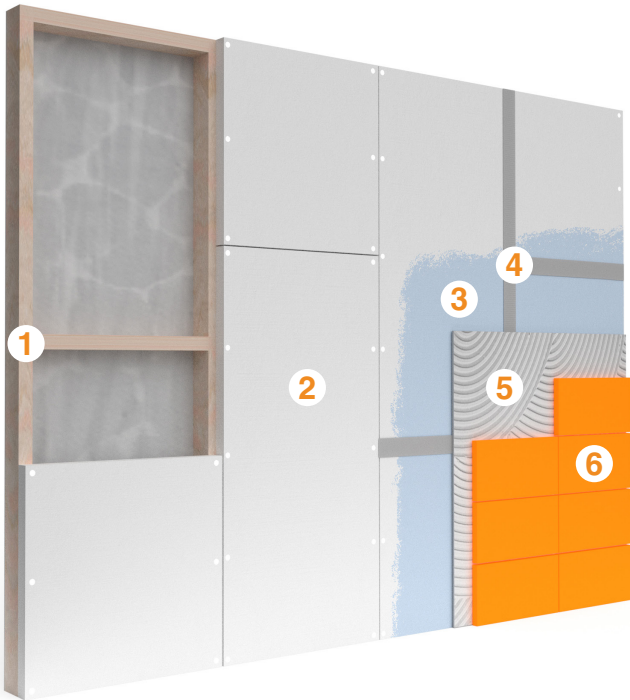
All joints should be reinforced with Arc Scrim Tape. If the boards are being used in a wet room, joints should be sealed with Arc Butyl Tanking Tape and boards should be coated with Arc Tanking Paste.

Facings

Boards should be fixed with the rough side out for tiling applications and smooth side out when painting or wallpapering.

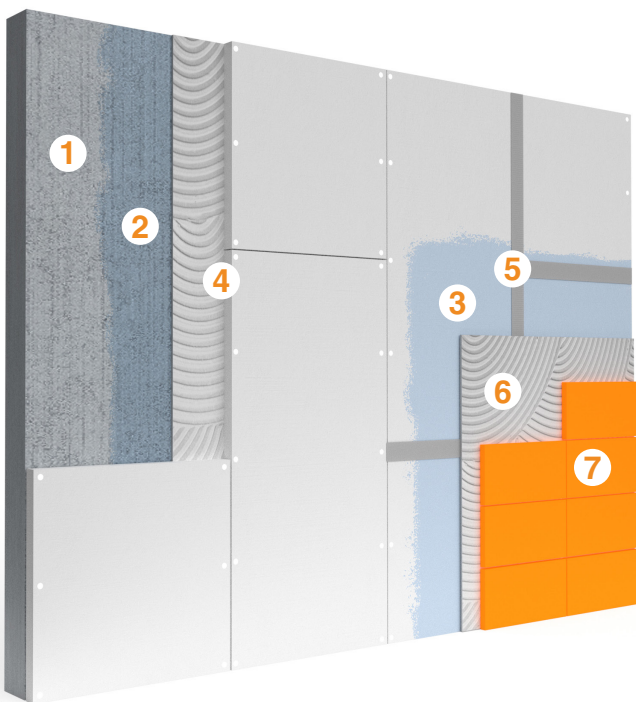


Installation on Stud Wall



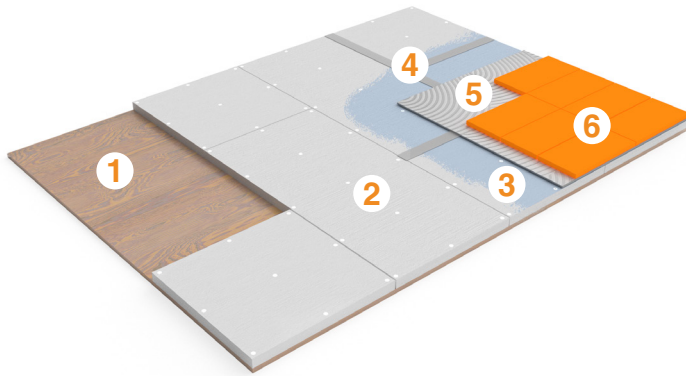
- 1 Vertical timber studs should be at a maximum of 600mm centres
- 2 12mm boards are recommended for walls. Fix Arc MagnaBoards to the frame using stainless steel or galvanised screws every 300mm. Fixings should be at least 15mm from the edge and 20mm from the corners. Boards should be offset so that 4 corners never meet at the same point.
- 3 Prime the Arc MagnaBoards with Arc Tillers Primer diluted three parts water to one part primer.
- 4 Joints should be taped with Arc Scrim Tape or with Arc Butyl Tanking Tape for water resistance.
- 5 Apply a bed of Arc Pro-Flex Tile Adhesive to the Arc MagnaBoard.
- 6 Set the tiles or slabs in accordance with the usual practice.

Installation on Concrete or Block Wall



- 1 Ensure the substrate is structurally sound and free of dust and other contaminants.
- 2 Prime the substrate with Arc Tillers Primer diluted three parts water to one part primer.
- 3 12mm boards are recommended for walls. Prime both sides and edges of the boards with Arc Tillers Primer diluted 3 parts water to one part primer.
- 4 Apply a bed of Arc Pro-Flex adhesive to the substrate and bed in the boards ensuring full surface contact. Using stainless steel or galvanised fixings, fix boards every 300mm. Fixings should be at least 15mm from the edge and 20mm from the corners. Boards should be offset so that 4 corners never meet at the same point.
- 5 Joints should be taped with Arc Scrim Tape or with Arc Butyl Tanking Tape for water resistance.
- 6 Apply a bed of Arc Pro-Flex Tile Adhesive to the Arc MagnaBoard.
- 7 Set the tiles or slabs in accordance with the usual practice.

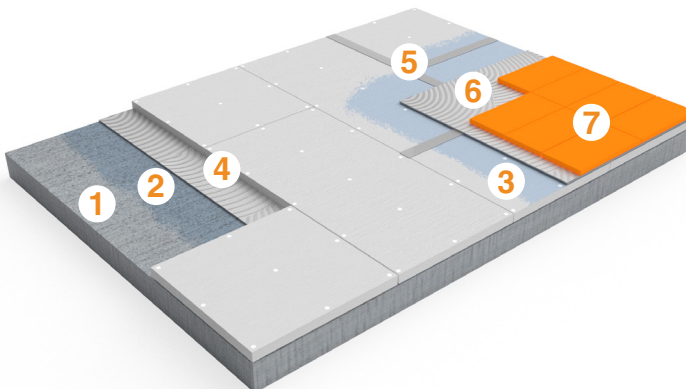
Installation on Timber Floor



- 1 Ensure the substrate is structurally sound and free of dust and other contaminants.
- 2 6mm or 12mm boards are recommended for floors. Fix Arc MagnaBoards to the timber floor using stainless steel or galvanised screws every 300mm. Fixings should be at least 15mm from the edge and 20mm from the corners. Boards should be offset so that 4 corners never meet at the same point.
- 3 Prime the Arc MagnaBoards with Arc Tillers Primer diluted three parts water to one part primer.
- 4 Joints should be taped with Arc Scrim Tape or with Arc Butyl Tanking Tape for water resistance.
- 5 Apply a bed of Arc Flexible Tile Adhesive to the Arc MagnaBoard.
- 6 Set the tiles or slabs in accordance with the usual practice.

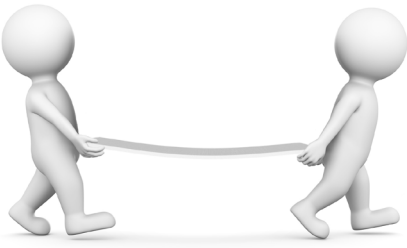
Note: for greater adhesion and durability, as well as screw fixing, boards can be set in a bed of Arc Rapid Flex Tile Adhesive or beads of MS-11.

Installation on Concrete Floor

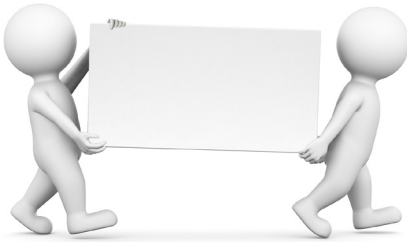


- 1 Ensure the substrate is structurally sound and free of dust and other contaminants.
- 2 Prime the substrate with Arc Tillers Primer diluted three parts water to one part primer.
- 3 6mm or 12mm boards are recommended for floors. Prime both sides and edges of the boards with Arc Tillers Primer diluted 3 parts water to one part primer.
- 4 Apply a bed of Arc Flexible Tile Adhesive to the substrate and bed in the boards ensuring full surface contact. Using stainless steel or galvanised fixings, fix boards every 300mm. Fixings should be at least 15mm from the edge and 20mm from the corners. Boards should be offset so that 4 corners never meet at the same point.
- 5 Joints should be taped with Arc Scrim Tape or with Arc Butyl Tanking Tape for water resistance.
- 6 Apply a bed of Arc Flexible Tile Adhesive to the Arc MagnaBoard.
- 7 Set the tiles or slabs in accordance with the usual practice.

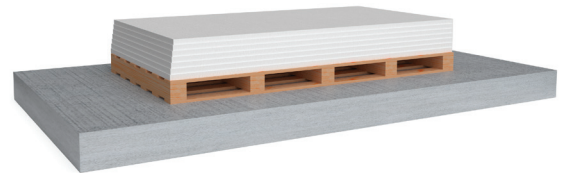
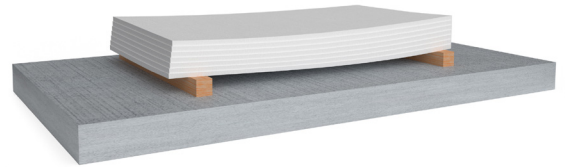
Handling & Storage



Arc MagnaBoards must be lifted by two people and not dragged across each other to prevent scratching. Don't grab the boards by the corners and don't rest them on their edge or corners. Boards should be carried vertically.



Store boards flat on a pallet. If stored outdoor boards must be kept covered. Keep dry and frost free ideally between 5°C and 30°C.



Comparison Chart

ATTRIBUTE	MagnaBoard	Cement Board	Gypsum Wallboard	Plywood	OSB
People Safe	YES	NO	NO	YES	NO
Fire Suppression	YES	NO	SLIGHT	NO	NO
Flame Spread	0	0	LOW/15	HIGH	HIGH
Smoke Developed	NONE	NONE	LOW	HIGH	HIGH
Water Resistant	YES	NO	NO	NO	NO
Mould/Mildew Resistant	YES	YES	NO	NO	NO
CO ₂ Footprint	LOW	HIGH	HIGH	LOW	MODERATE
Termite Resistant	YES	YES	YES	NO	NO
Impact Strength	HIGH	MEDIUM	LOW	HIGH	MEDIUM
Combustibility	NON/COM	NON/COM	FACING	BURNS	BURNS
Freeze Thaw	GOOD	GOOD	POOR	GOOD	GOOD



IDA Business & Technology Park
Ballynattin, Arklow, Co. Wicklow, Ireland
Tel: +353 (0)402 32370
Email: sales@arcbuildingproducts.ie
Web: www.arcbuildingproducts.ie