

Installation Instructions

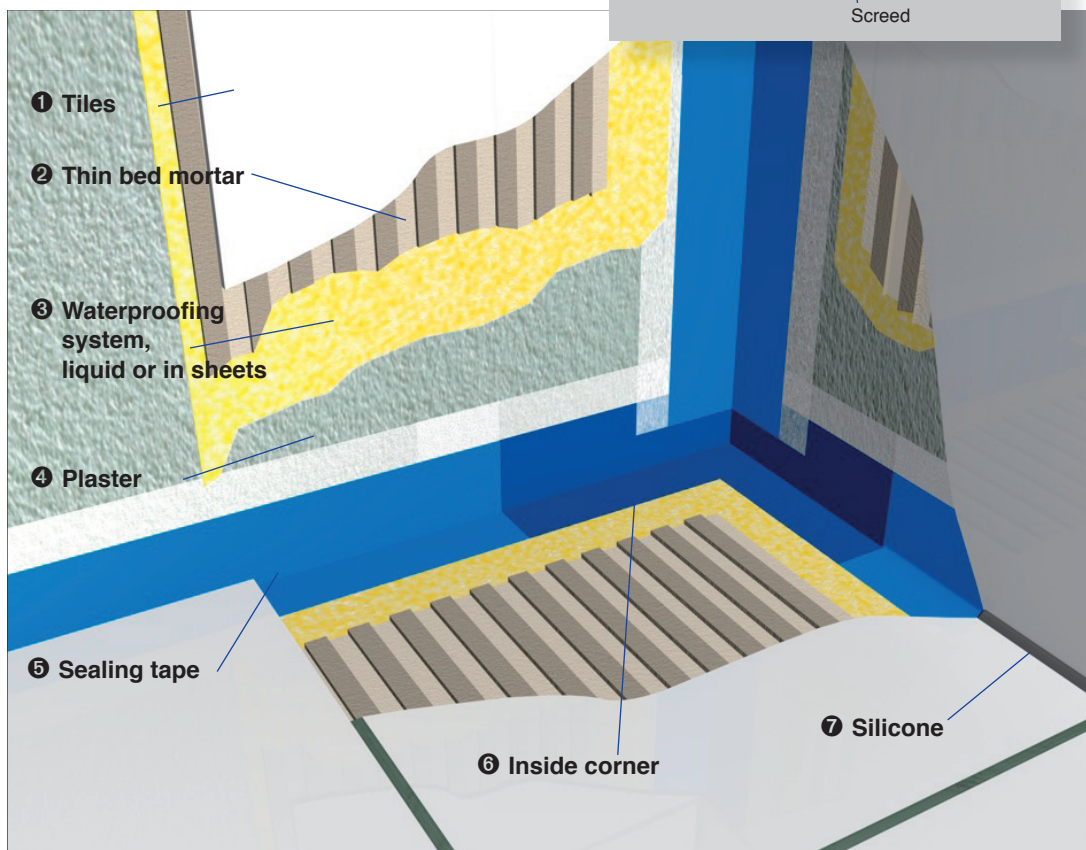
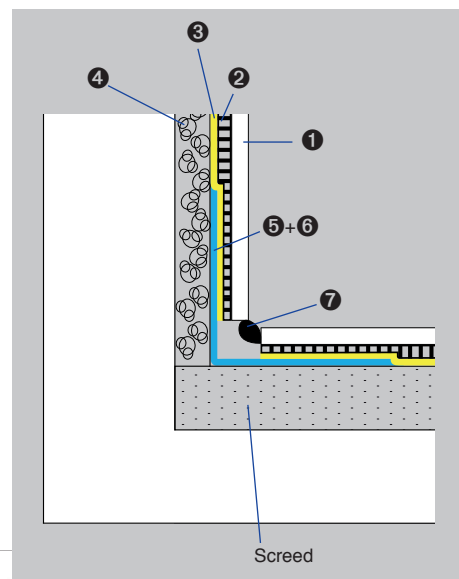
Arc Sealing Tape

Product Description

- Waterproof, flexible sealing tape for indoor use.

General Information

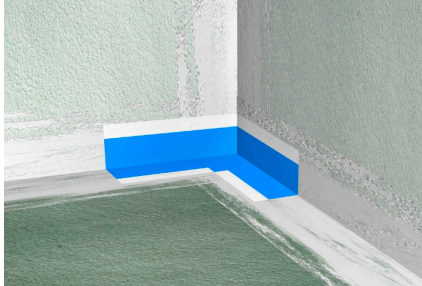
- Surfaces – dry or moist - must be stable, warp resistant, and free from loose dust, dirt and release agents.





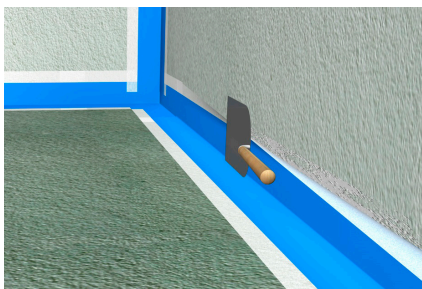
Step 1

- Prepare tile adhesive to manufacturer's instructions (Min C2 classification)
- Using a 4 mm notched trowel apply the tile adhesive in the area where joint sealing tape and accessories will be employed. (Wall to wall joints and wall to floor joints)



Step 2

- Place the corners on the adhesive bed. Using the flat side of the trowel, press out excessive adhesive and air pockets.
- Spread out the excessive tile adhesive.

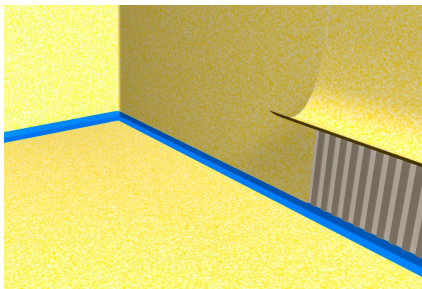


Step 3

- Use a liquid sealant on areas of the corners which will be covered by the Arc Sealing Tape.
- Apply the joint sealing tape pressing firmly onto the adhesive bed on wall and floor. Centre the tape so as wall and floor have equal coverage. Joint sealing tape and corners must have an overlap of at least 5CM's.
- Press out excessive adhesive and any air pockets. Spread the excessive adhesive.

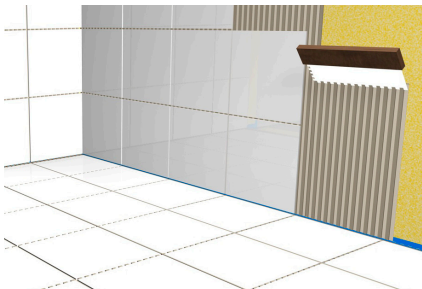
Note

Please pay attention to the corresponding instructions for use if you apply a decoupling membrane.



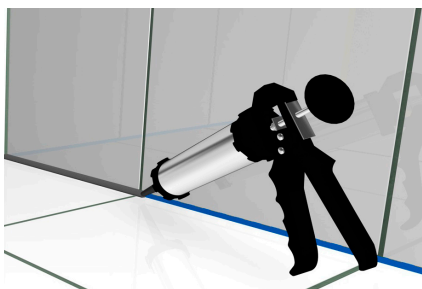
Step 4

- Cut sealing membrane to the required sizes. Apply tile adhesive on surfaces to be covered by sealing membrane using a 4 mm notched trowel.
- Press the sealing membrane firmly in place. Using the flat side of the trowel press out excessive adhesive and any air pockets.



Step 5

- Apply tile adhesive onto sealing membrane and tiling can begin immediately.



Step 6

- Seal the joints between floor and walls properly using a suitable silicone and apply it properly at two flanks.
- Finish the installation by applying a suitable silicone to the wall to floor and corner joints.

The above technical data represent average values. The technical information and application instructions are based on our experience and present knowledge. However, it is each user's own responsibility to make trials with the original substrates in order to verify the suitability of our products for the intended purpose, taking into consideration all application related parameters. Please contact us if you have any further questions.