

Technical Data Sheet

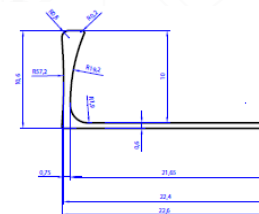
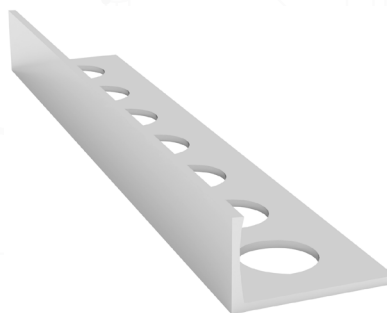
Date of compilation: 26/11/2021

ARC CONTRACTORS STRAIGHT EDGE TRIM

DESCRIPTION

Arc Contractors Straight Edge Trim is designed to protect the edge of mosaic, ceramic or similar hard surface in wall or floor installations - Perfect for mosaic or other smaller format ceramic tiles.

The suitability of aluminium must be determined if Chemical or mechanical stresses are anticipated.



AVAILABILITY

Arc Contractors Straight Edge Trim is available in 2.5m lengths in depths of 8, 10 and 12mm in chrome finish.

INSTALLATION

1. Select trim according to tile thickness.
2. Trowel tile adhesive over the area that forms the perimeter of the tiled covering.
3. Press the perforated anchoring leg of the trim into the tile adhesive and align, mechanical fix required.
4. Trowel additional adhesive over the perforated anchoring leg to ensure full coverage.
5. Solidly embed the tiles so that the tiled surface is flush with the top of the profile. The profile should not be higher than the tiled surface, but rather up to approx. 1 mm lower.
6. Fill the joint completely with grout.

MAINTENANCE

Arc Contractors Straight Edge Trim does not require any special maintenance. Oxidation films on Aluminium may be removed with a common polishing agent; however, they do reoccur.

Aluminium must be tested to verify its suitability if chemical stresses are anticipated. Cementitious materials, in conjunction with moisture, become alkaline. Since aluminium is sensitive to alkaline substances, exposure to the alkali (depending on the concentration and time of exposure) may result in corrosion (aluminium hydroxide formation). Therefore, it is important to remove adhesive or grout residue from visible surfaces. In addition, ensure that the profile is solidly embedded in the setting material and that all cavities are filled to prevent the collection of alkaline water.

The anodised layer creates a finish that retains a uniform appearance during normal use.

Technical Data Sheet

Date of compilation: 26/11/2021

ARC CONTRACTORS STRAIGHT EDGE TRIM

The surface, however, is susceptible to scratching and wear and may be damaged by tile adhesive, mortar, or grouting material. Therefore, setting materials must be removed immediately. Otherwise, the description regarding aluminium applies.

TECHNICAL DETAILS

EN AW 6063(TS EN 573-3)

Si%	0.2-0.6
Fe%	Max 0.35
Cu%	Max 0.1
Mn%	Max 0.1
Mg%	0.45-0.9
Zn%	Max 0.1
Ti%	Max 0.1
Cr%	Max 0.1
Al	Remainder

NOTE

The information contained on this spec sheet is given voluntarily and in good faith. It is to the best of our knowledge true and accurate; however it may contain information which is inappropriate under certain conditions of use. The company cannot accept responsibility for any loss or damage due to inappropriate use or the possibility of variations of working conditions and of workmanship outside our control.

The user must ensure the product's suitability for the application intended and if in doubt should seek a written technical specification for the product's application.